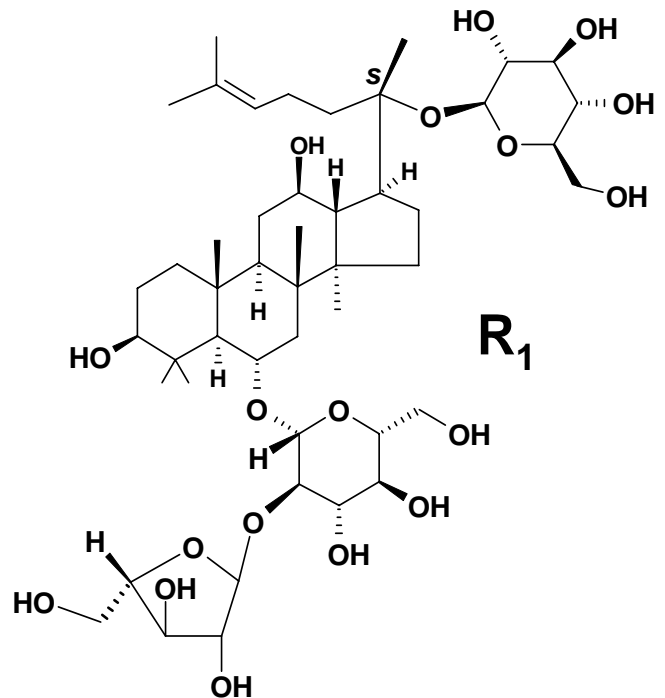
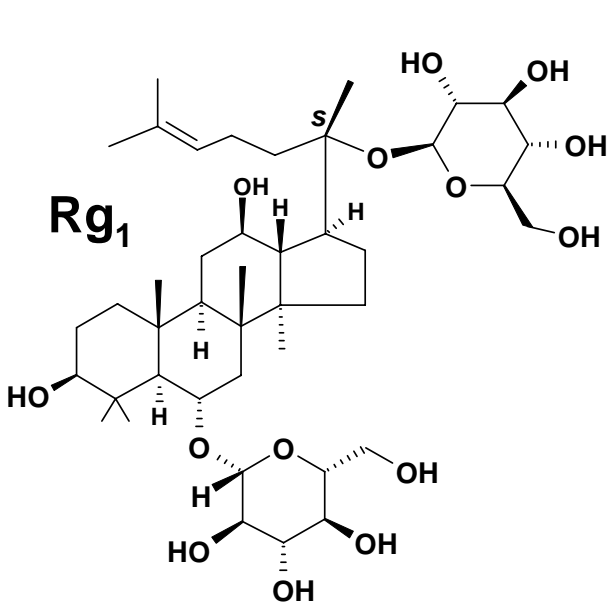
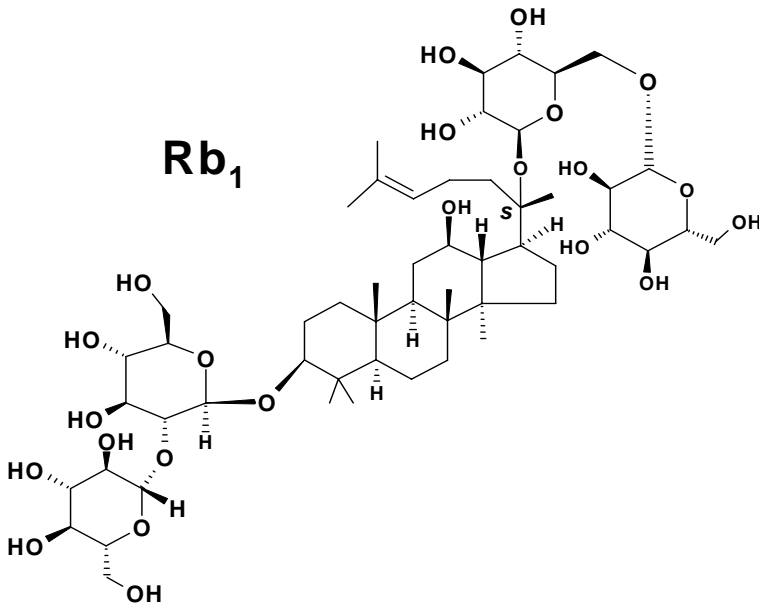


Product Specifications

Product Name

Ginsenosides Rb₁+Rg₁+R₁ (isolated from *root*)

Structure of Principal
Ginsenosides (*root*)



Test**Specification**

Plant Origin*Panax ginseng* C.A. Mey., AraliaceaeSource: **Root**Rb₁: > 30%Rg₁: > 29%R₁: > 6%**TOTAL Ginsenoside content: 65-80%****Appearance**Pale-yellow powder (*root*)Yellow to yellow-brown powder (*leaves and stem*)Yellow-brown to brown powder (*flower*)**Assay (hplc)**

As noted above

Heavy Metals (As, Pb)

< 10 ppm

LOD< 3%
