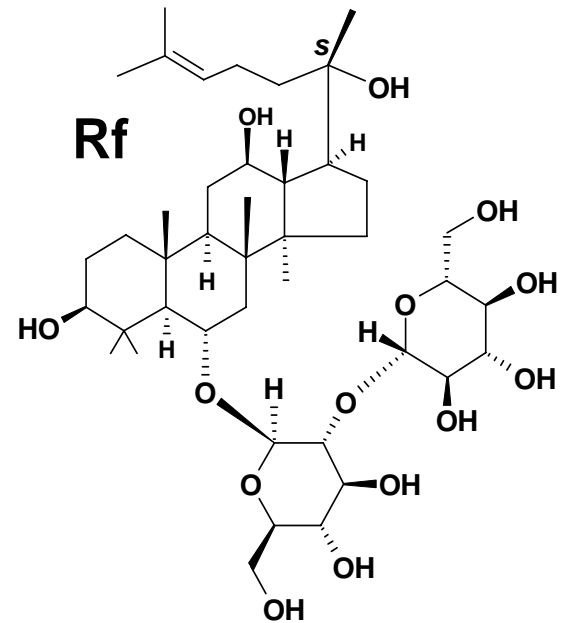
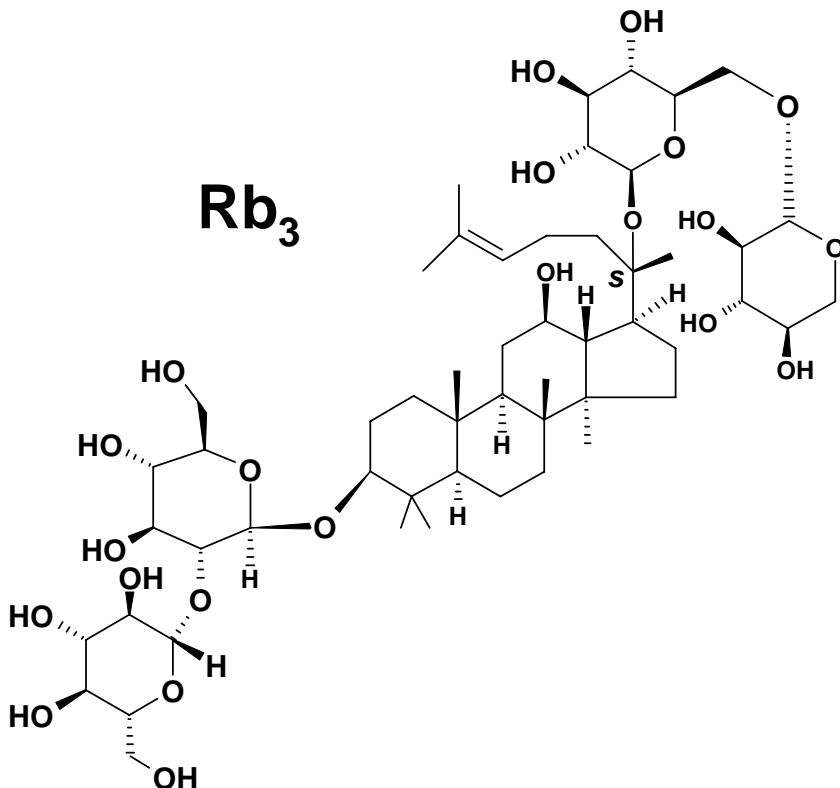
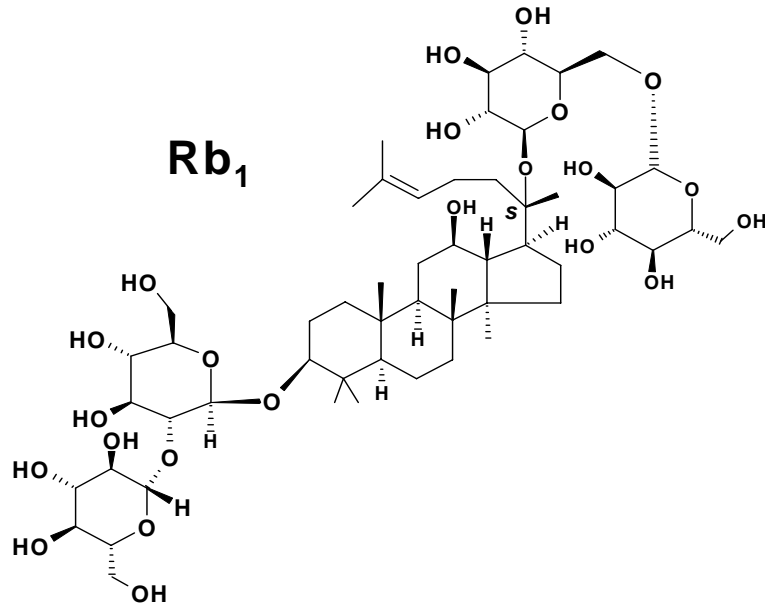


# Product Specifications

**Product Name**

**Ginsenosides Rb<sub>1</sub>+Rb<sub>3</sub>+Rf** (isolated from *flower*)

**Structure of Principal  
Ginsenosides** (*flower*)



---

***Test******Specification***

---

---

**Plant Origin***Panax ginseng* C.A. Mey., *Araliaceae*Source: ***Flower***Rb<sub>3</sub>: > 20%Rb<sub>1</sub>: > 13%

Rf: &gt; 7%

**TOTAL Ginsenoside content: >40%**

---

**Appearance**Pale-yellow powder (*root*)Yellow to yellow-brown powder (*leaves and stem*)Yellow-brown to brown powder (*flower*)**Assay (hplc)**

As noted above

**Heavy Metals (As, Pb)**

&lt; 10 ppm

**LOD**< 3%

---