

[Jump to Website](#)

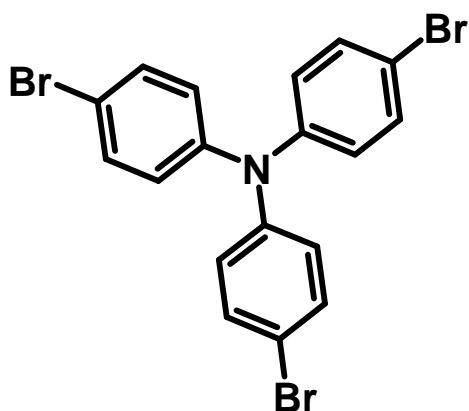
[Request Quote](#)

## Product Specifications

### Tris(4-bromophenyl)amine

CAS 4316-58-9

Structure:



Mol. Formula  
Source

$C_{18}H_{12}Br_3N$   
Synthetic

Mol. Wt.

482.01

*Test*

*Specification*

Identity	IR
Appearance	Pale-green microcryst. powder
Mp	141-143 °C
Assay (hplc )	> 98%
Moisture	< 0.5%
Ash (residue on ignition)	< 0.2%
Heavy metals	< 10 ppm

*Storage:* Maintain in cool, dry containment.