

[Jump to Website](#)

[Request Quote](#)

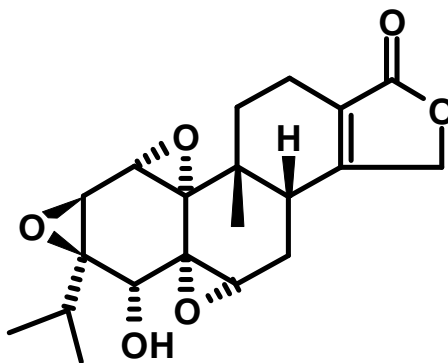
Product Specifications

Triptolide

CAS 38748-32-2

Syn: (-)-Triptolide

Structure:



Mol. Formula

$C_{20}H_{24}O_6$

Mol. Wt.

360.4

Source

Isolated from Tripterygium wilfordii Hook F.

Test

Specification

Identity	Infrared, H-NMR
Appearance	White microcryst. solid
Mp	225-227 °C
Assay (hplc)	≥ 98 %
Sp. Rot., [α]_D	-152 ° (c = 0.150; MeOH)
Ash	< 0.2 %
Heavy metals	< 10 ppm

Storage: Maintain in cool, dry containment.