

[Jump to Website](#)

[Request Quote](#)

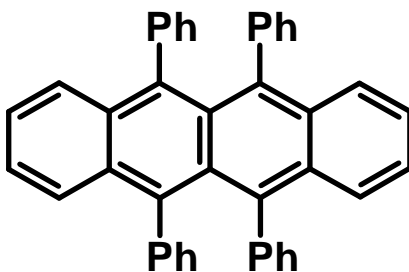
Product Specifications

Rubrene

CAS 517-51-1

Syn: 5,6,11,12-Tetraphenylnaphthacene

Structure:



Mol. Formula
Source

C₄₂H₂₈
Synthetic

Mol. Wt.

532.68

<i>Test</i>	<i>Specification</i>
Identity	IR
Appearance	Dark red crystals
Mp	332-334 °C [Lit.]
Assay (hplc)	> 98 %
LOD	< 0.5 % @ 270 °C
Ash (residue on ignition)	< 0.2 %
Heavy metals	< 10 ppm

Storage: Maintain in cool, dry containment.