

[Jump to Website](#)

[Request Quote](#)

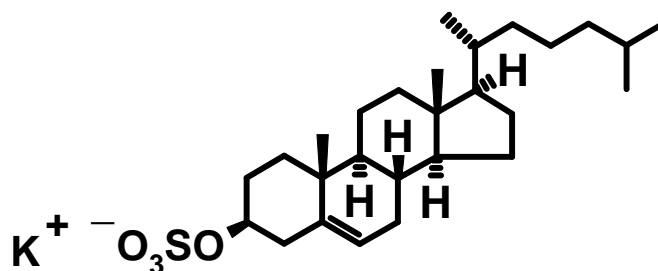
## Product Specifications

### Potassium Cholesterol Sulfate

CAS 6614-96-6

Syn: Cholesterol Potassium Sulfate; Cholesterol Sulfate, Potassium; KCS

Structure:



Mol. Formula  
Source

C<sub>27</sub>H<sub>45</sub>KO<sub>4</sub>S • H<sub>2</sub>O  
Synthetic

Mol. Wt.

522.83

Test	Specification
Appearance	White to off-white solid
Mp	219-221°C ( <i>dec.</i> )
Assay	≥ 98%
Assay Methodology	Optical Rotation
Sp. Rot., [α] <sub>D</sub> (DMF; l = 2 dm, c = 5.38 mg/mL)	-22.7° ~ -24.7°
Water Content (K-F)	< 4.5%
Loss on Drying (2hr @ 45°C)	< 0.5%
Free Cholesterol	< 3.0% (typically ~2%)
pH (1% Suspension in water)	7~8
Cl	< 0.20%
Heavy Metals	< 10 ppm

- cont'd -

- *cont'd* -

<i>Test</i>	<i>Specification</i>
<b>Pb</b>	10 ppm
<b>As</b>	3 ppm
<b>Hg</b>	1 ppm
<b><i>Microbiological Specification</i></b>	
Total Aerobic (USP25)	<100 CFU/g
Includes:	
<i>Gram Negative</i>	Negative
<i>Staphylococcus aureus</i>	Negative
<i>Candida albicans</i>	Negative
<i>Aspergillus species</i>	Negative
Mold and Yeast (USP25)	≤100 CFU/g

---

***Storage:*** Maintain in cool, dry cool containment.