

[Jump to Website](#)

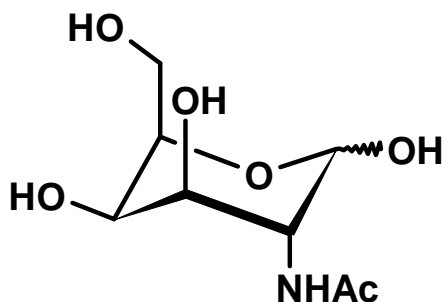
[Request Quote](#)

Product Specifications

N-Acetyl-D-galactosamine

CAS 14215-68-0

Structure:



Mol. Formula
Source

$C_8H_{15}NO_6$
Synthetic

Mol. Wt.

221.21

| <i>Test</i> | <i>Specification</i> |
|--|---|
| Identity | IR |
| Appearance | White to pale-yellow powder |
| Mp | 158-162 °C |
| Assay (hplc) | > 98 % |
| Sp. Rot., $[\alpha]_D$ | + 85 ° (c = 1, H ₂ O after 5 hr) |
| LOD | < 1% |
| Ash (residue on ignition) | < 0.1% |
| Heavy metals | < 10 ppm |

Storage: Maintain in cool, dry containment.