

[Jump to Website](#)

[Request Quote](#)

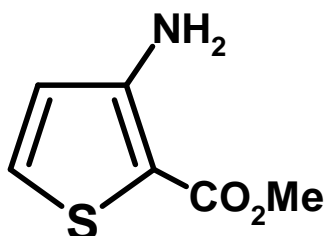
Product Specifications

Methyl 3-Amino-2-thiophenecarboxylate

CAS 22288-78-4

Syn: 2-(Carbomethoxy)-3-aminothiophene

Structure:



Mol. Formula
Source

C₆H₇NO₂S
Synthetic

Mol. Wt.

157.02

Test

Specification

Identity	Infrared
Appearance	White to off-white solid
Mp	66-68 °C
Assay	> 98 %
Moisture	< 0.5%
Ash (residue on ignition)	< 0.5%
Heavy metals	< 10 ppm

Storage: Maintain in cool, dry containment.