

[Jump to Website](#)

[Request Quote](#)

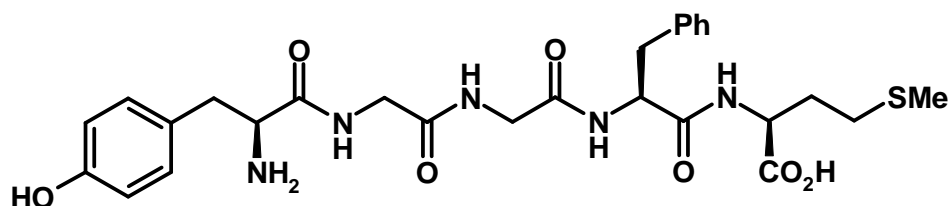
## Product Specifications

### Met-Enkephalin

CAS 58569-55-4

Sequence: Tyr-Gly-Gly-Phe-Met-OH

Structure:



Mol. Formula  
Source

$C_{27}H_{35}N_5O_7S$   
Synthetic  
(Calculated as anhyd., Acetate-free)

Mol. Wt.

573.67

---

---

#### Test

#### Specification

Appearance	White powder
Purity (hplc; dry basis)	≥ 98%
Acetate Content	3.5-4.5%
Bacterial Endotoxins	≤ 10 EU/mg
Water Content (K-F)	≤ 5.0%
Residual Organic Solvents	DMF, ≤ 0.088% MeCN, ≤ 0.041%

*Storage:* Maintain in cool, dry containment.