

[Jump to Website](#)

[Request Quote](#)

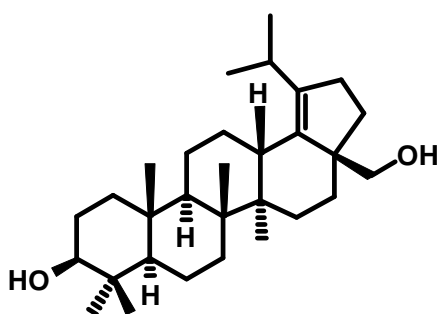
Product Specifications

Lup-18-ene-3,28-diol

CAS 54973-45-4

Syn: Lup-3 β ,28-dihydroxy-18-ene

Structure:



Mol. Formula
Source

$C_{30}H_{50}O_2$
Betula pendula (Silver Birch bark)

Mol. Wt.

442.7

<i>Test</i>	<i>Specification</i>
Identity	NMR
Appearance	White microcryst. powder
Mp	220 °C [Lit.]
Assay (hplc)	≥ 98 %
Sp. Rot., [α] _D	N/A
LOD	< 1%
Ash (residue on ignition)	< 0.2%
Heavy metals	< 10 ppm

Storage: Maintain in cool, dry, dark containment