

[Jump to Website](#)

[Request Quote](#)

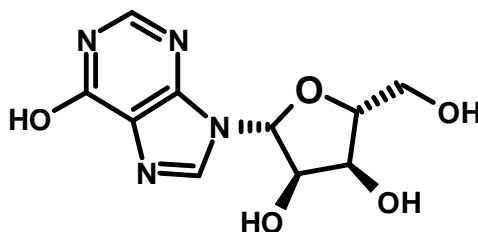
Product Specifications

L-Inosine

CAS 21138-24-9

Syn: 1,9-Dihydro-9-β-L-ribofuranosyl-6H-purin-6-one

Structure:



Mol. Formula
Source

$C_{10}H_{12}N_4O_5$
Synthetic

Mol. Wt.

268.23

Test

Specification

Appearance	White, microcrystalline solid
Mp	218 °C
Assay	> 98 %
Sp. Rot., [α] _D	- 70.2 ° (H ₂ O) [Lit.]
LOD	< 1%
Ash (residue on ignition)	< 0.1%
Heavy metals	< 10 ppm

Storage: Maintain in cool, dry containment.