

[Jump to Website](#)

[Request Quote](#)

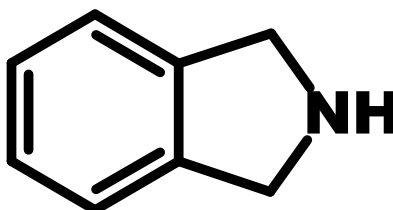
Product Specifications

Isoindoline

CAS 496-12-8

Syn: 2,3-Dihydro-1H-isoindole; 2-Azaindane

Structure:



Mol. Formula
Source

C_8H_9N
Synthetic

Mol. Wt.

119.16

Test

Specification

| | |
|--------------------------|--|
| Identity | IR |
| Appearance | Pale yellow liquid or off-white cast solid |
| Mp | 17 °C (lit.) |
| Bp | 221 °C (lit.) |
| Assay (glpc) | > 98% |
| LOD | < 1% |
| $d_{25}^{\circ C}$ | 1.05 g/mL (lit.) |
| RI, $\eta_D^{20\circ C}$ | 1.57 (lit.) |
| Fp | 94 °C |

Storage: Maintain in cool, dry containment.