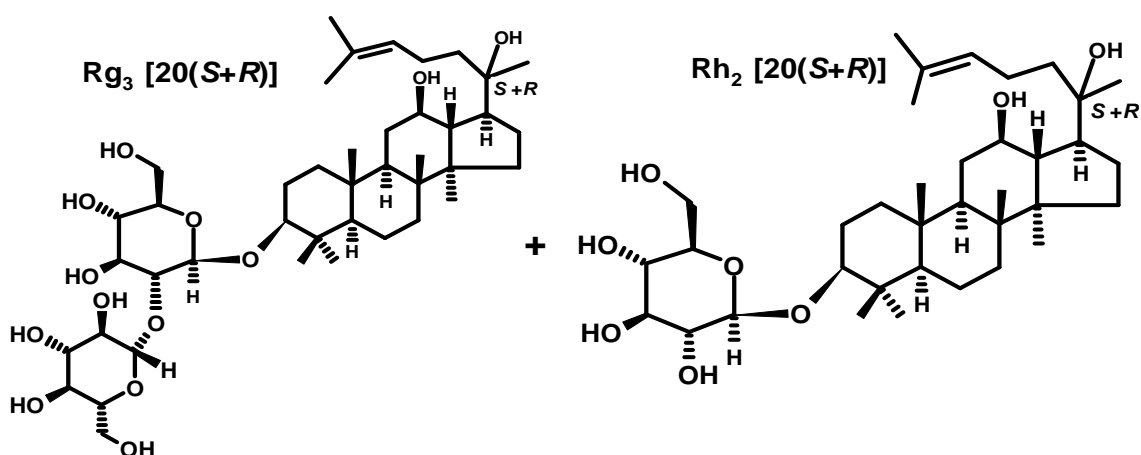


## Product Specifications

<b>Product Name</b>	<b>Ginsenoside Rg<sub>3</sub></b> +	<b>Ginsenoside Rh<sub>2</sub></b>
<b>CAS No.</b>	14197-60-5 (20-S enantiomer) 38243-03-7 (20-R enantiomer)	78214-33-2 (20-S enantiomer) 112246-15-8 (20-R enantiomer)

### Structure of Principal Ginsenosides



<b>Mol. Formula</b>	<b>C<sub>42</sub>H<sub>72</sub>O<sub>13</sub></b>	<b>Mol. Formula</b>	<b>C<sub>36</sub>H<sub>62</sub>O<sub>8</sub></b>
<b>Plant Origin</b>	<i>Panax ginseng</i> C.A. Mey., <i>Araliaceae</i>		
<b>Source</b>	Leaves		

<i>Test</i>	<i>Specification</i>
<b>Assay (hplc)</b>	Rg <sub>3</sub> : > 60% Rh <sub>2</sub> : > 30%
<b>TOTAL Ginsenoside content:</b>	> 90% (lower grades available)
<b>Appearance</b>	Off-yellow powder
<b>LOD</b>	< 1.5%
<b>Heavy Metals (As, Pb)</b>	< 10 ppm

*Storage:* Maintain in cool, dry containment