

[Jump to Website](#)

[Request Quote](#)

Product Specifications

Ginsenoside Rg₃

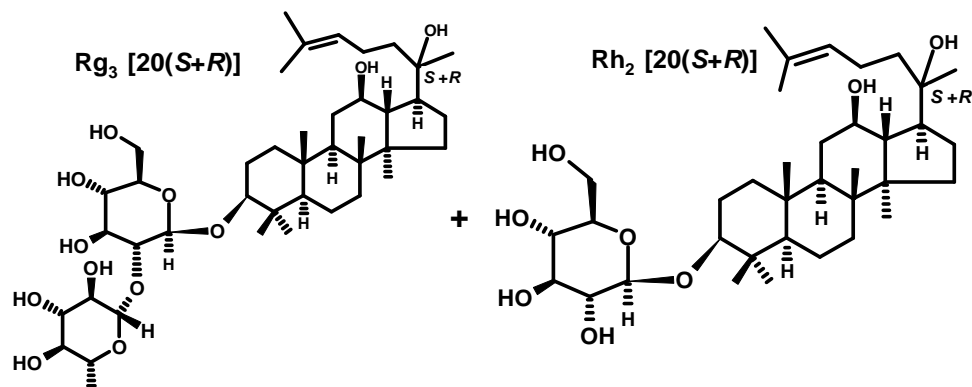
+

Ginsenoside Rh₂

CAS 14197-60-5 (20-S enantiomer)
38243-03-7 (20-R enantiomer)

78214-33-2 (20-S enantiomer)
112246-15-8 (20-R enantiomer)

Structure:



Mol. Formula
Plant Origin
Source

$C_{42}H_{72}O_{13}$
Panax ginseng C.A. Mey., Araliaceae
Leaves

Mol. Wt.

$C_{36}H_{62}O_8$

Test

Specification

Appearance	Off-yellow powder
Assay (hplc)	Rg ₃ : > 60% Rh ₂ : > 30%
TOTAL Ginsenoside content:	> 90% (lower grades available)
LOD	< 1.5%
Heavy metals	< 10 ppm

Storage: Maintain in cool, dry containment.

Wilshire Technologies

TEL: +1- 609-683-1117