

[Jump to Website](#)

[Request Quote](#)

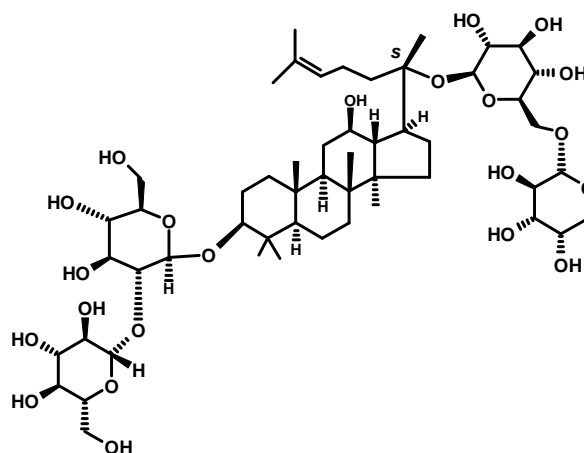
## Product Specifications

### Ginsenoside Rb<sub>2</sub>

CAS 11021-13-9

Syn: Ginsenoside C<sub>2</sub>

Structure:



Mol. Formula

C<sub>53</sub>H<sub>90</sub>O<sub>22</sub>

Mol. Wt.

1079.27

Source

*Panax ginseng* C.A. Mey., Araliaceae  
Root

<i>Test</i>	<i>Specification</i>
Identity	Infrared, TLC
Appearance	White microcryst. powder
Mp	204-205 °C
Assay (hplc)	≥ 98 %
Heavy metals	< 10 ppm

*Storage:* Maintain in cool, dry containment.