

[Jump to Website](#)

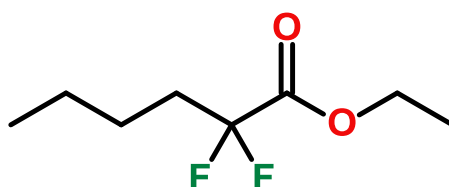
[Request Quote](#)

Product Specifications

Ethyl 2,2-Difluorohexanoate

CAS 74106-81-3

Structure:



Mol. Formula $C_8H_{14}F_2O_2$
Source Synthetic

Mol. Wt. 180.19

Test

Specification

Identity	IR
Appearance	Colorless to pale yellow liquid
Bp	172 °C /760 mmHg
Purity (glpc)	> 98%
Moisture (K-F)	< 0.5%
$d_{20}^{\circ C}$	1.029 g/mL
RI, $\eta_D^{20}^{\circ C}$	1.387
Fp	57 °C

Storage: Maintain in cool, dry containment.