

[Jump to Website](#)

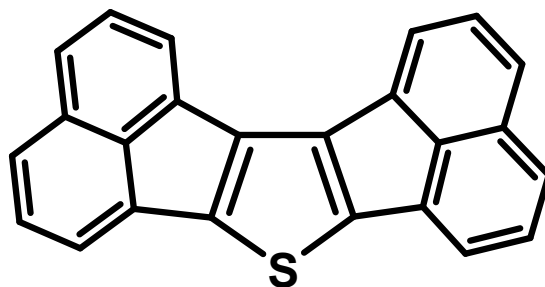
[Request Quote](#)

Product Specifications

Diacenaphtho(1,2-b 1',2'-d)thiophene

CAS 203-42-9

Structure:



Mol. Formula
Source

$C_{24}H_{12}S$
Synthetic

Mol. Wt.

332.427

<i>Test</i>	<i>Specification</i>
Appearance	Red microcryst. solid
Mp	285-286 °C (lit.)
Assay (hplc)	> 98%
LOD	< 1%
Ash (residue on ignition)	< 0.2%
Heavy Metals	< 10 ppm

Storage: Maintain in cool, dry containment.