

[Jump to Website](#)

[Request Quote](#)

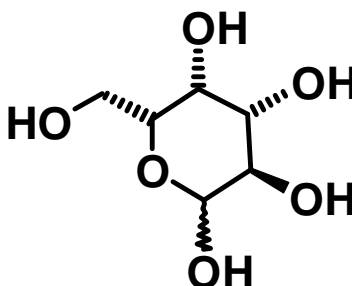
## Product Specifications

### **D-(+)-Galactose (animal-origin free, vegetal-derived)**

CAS 59-23-4

Grade: non-cGMP

Structure:



Mol. Formula  
Source

$C_6H_{12}O_6$   
Vegetal-derived (Peach Gum Tree Resin)

Mol. Wt.

180.18

---

#### *Test*

#### *Specification*

---

<b>Identity</b> (USP<197K>)	IR
<b>Appearance</b>	White microcryst. solid
<b>Sp. Rot., <math>[\alpha]_D</math></b> (USP<781S>)	+78° to +81.5° [ $c = 5$ in $NH_3/H_2O$ ]
<b>Purity</b> (hplc; area %)	≥ 99%
<b>LOD</b> (105 °C, 5 h, ambient pressure)	< 0.5%
<b>Ash</b> (residue on ignition) (USP<281>)	< 0.1%
<b>Acidity</b> (USP)	≤ 1.5 mL of 0.01N NaOH
<b>Heavy metals</b> (USP)	< 10 ppm

#### **Microbiological Specification**

**Total plate count** (USP) < 100 cfu/g

---

**Storage:** Maintain in a cool, dry containment.

**Non-GMO:** This product is derived from a non-GMO vegetal source as designated under EP regulations 1829/2003 and 1830/2003.

**TSE/BSE:** During production, storage and transport, all contact with any material of animal origin was excluded. Therefore, the requirements set forth in of the EP Comm. Directive 1999/82/EEC, CPMP/BWP/1230/98, and EP 01/2008: 50208 do not apply.