

[Jump to Website](#)

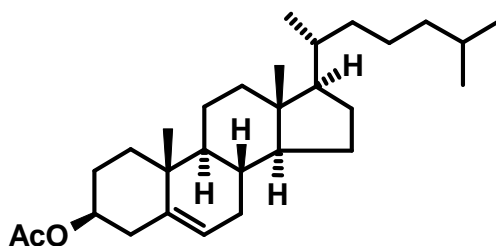
[Request Quote](#)

Product Specifications

Cholesteryl Acetate (vegetal-derived; semi-synthetic)

CAS 604-35-3

Structure:



Mol. Formula
Source

$C_{29}H_{48}O_2$
Saponin-derived, semi-synthetic

Mol. Wt.

428.70

<i>Test</i>	<i>Specification</i>
Identity	IR, NMR
Appearance	White, microcryst. solid
Mp	112-114 °C
Assay	> 99%
Sp. Rot., $[\alpha]_D$	- 44.0° (c = 2.0, CHCl ₃)
Ash (residue on ignition)	< 0.1%
Heavy metals	< 10 ppm

Storage: Maintain in cool, dry containment.