

[Jump to Website](#)

[Request Quote](#)

## Product Specifications

### **PhytoChol<sup>®</sup>** (Cholesterol, vegetal-derived, semi-synthetic)

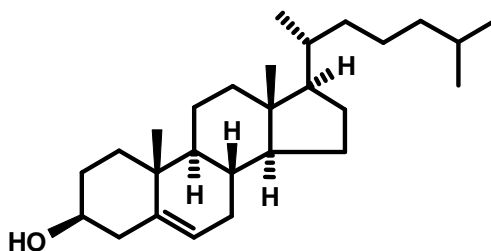
**CAS** 57-88-5

**EINECS** 200-353-2

**Syn:** Cholesterol; 3 $\beta$ -Cholest-5-en-3-ol

**Grade:** Pharmaceutical; cGMP and non-cGMP

**Structure:**



**Mol. Formula**

**C<sub>27</sub>H<sub>46</sub>O**

**Mol. Wt.**

386.66

**Source**

Vegetal-derived, semi-synthetic

**Retest Date**

3 years

---

---

<i>Test</i>	<i>Specification</i>
-------------	----------------------

**Identity**

EP, USP; IR

**Appearance**

White crystalline solid

**Mp**

147-150 °C (EP 0993)

**TLC**

EP 0993

**Color Test**

EP 0993

**Assay**

> 99%

Cholesterol (EP, USP)

[avail in cGMP & non-cGMP]

**Sp. Rot., [α]<sub>D</sub>**

< - 39 ° ( c = 2.0, CHCl<sub>3</sub> )

- cont'd -

- cont'd -

<i>Test</i>	<i>Specification</i>	
<b>LOD</b>	< 0.3%	(EP 0993)
<b>Sulfated Ash</b>	< 0.1%	(EP 0993)
<b>Acidity</b>	≤ 0.3 mL of 0.1 M HCl (EP 0993)	
<b>Solubility (EtOH)</b>	EP 0993	
<b>Heavy Metals</b>	≤ 10 ppm	

*Storage:* Maintain in cool, dry cool containment.

**Non-GMO:** This product is derived from a non-GMO vegetal source as designated under EP regulations 1829/2003 and 1830/2003.

**TSE/BSE:** The source of this product is pure olive oil. During production, storage and transport, all contact with any material of animal origin was excluded. Therefore, the requirements set forth in of the EP Comm. Directive 1999/82/EEC, CPMP/BWP/1230/98, and Ph. Eur. Suppl. 2000:5.2.8, do not apply.