

[Jump to Website](#)

[Request Quote](#)

Product Specifications

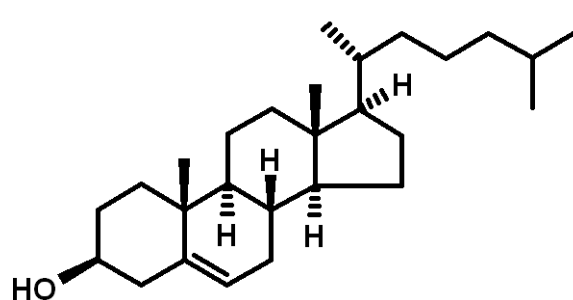
PhytoChol[®] (vegetal-derived, semi-synthetic Cholesterol)

CAS 57-88-5

Syn: Cholesterol; 3 β -Cholest-5-en-3-ol

Grade: Cosmetic

Structure:



Mol. Formula

C₂₇H₄₆O

Mol. Wt.

386.66

Source

Vegetal-derived, semi-synthetic

Retest Date

3 years

Test

Specification

Identity	USP, EP; IR
Appearance	White crystalline solid
Mp	147-150 °C
TLC	EP 0993
Color Test	EP 0993
Assay	
Cholesterol (EP, USP)	> 99%
Total Impurities	< 200 ppm
Sp. Rot., [α]_D	< - 39° (c = 2.0, CHCl ₃)

- cont'd -

-cont'd-

<i>Test</i>	<i>Specification</i>
LOD	< 0.3 %
Sulfated Ash	< 0.1%
Acidity	≤ 0.3 mL of 0.1 M HCl (EP 0993)
Solubility (EtOH)	EP 0993
Heavy metals	< 10 ppm

Storage: Maintain in cool, dry containment.

Non-GMO: This product is derived from a non-GMO vegetal source as designated under EP regulations 1829/2003 and 1830/2003.

TSE/BSE: The source of this product is pure olive oil. During production, storage and transport, all contact with any material of animal origin was excluded. Therefore, the requirements set forth in of the EP Comm. Directive 1999/82/EEC, CPMP/BWP/1230/98, and Ph. Eur. Suppl. 2000:5.2.8, do not apply.