

[Jump to Website](#)

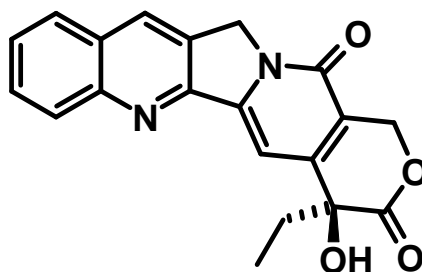
[Request Quote](#)

## Product Specifications

### Camptothecin

CAS 7689-03-4

Structure:



Mol. Formula  
Source

$C_{20}H_{16}N_2O_4$   
Semi-synthetic

Mol. Wt.

348.36

<i>Test</i>	<i>Specification</i>
Appearance	Pale-yellow, microcryst. solid
Mp	> 285 °C (99%)
Assay (hplc)	90%; 92%; 98%
Sp. Rot., [ $\alpha$ ] <sub>D</sub>	> +30° (CHCl <sub>3</sub> / MeOH, 8:2)
LOD	< 0.5 %
Heavy metals	< 20 ppm
UV <sub>max</sub>	220, 254, 290. 370 nm (exhibits intense blue fluorescence under UV radiation)

*Storage:* Maintain in cool, dry containment.