

[Jump to Website](#)

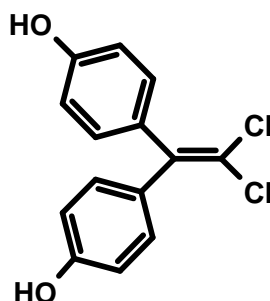
[Request Quote](#)

Product Specifications

Bis(4-hydroxyphenyl)-2,2-dichloroethylene

CAS 14868-03-2
Syn: Bisphenol C

Structure:



Mol. Formula
Source

$C_{14}H_{10}Cl_2O_2$
Synthetic

Mol. Wt.

281.14

<i>Test</i>	<i>Specification</i>
Identity	Infrared, H-NMR
Appearance	White to pale-yellow microcryst. solid
Mp	210°– 213°C [Lit.]
Assay (hplc)	> 98% (typically 99%)
pH (1% suspension in H ₂ O)	6.5 – 7.5
Water (K-F)	< 0.5 %
Heavy metals	< 10 ppm
Free phenol	≤ 0.2 %.

Storage: Maintain in cool, dry containment.