

[Jump to Website](#)

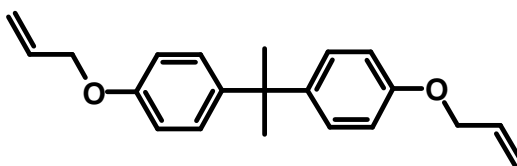
[Request Quote](#)

Product Specifications

Bisphenol A Diallyl Ether

CAS 3739-67-1

Structure:



Mol. Formula
Source

$C_{21}H_{24}O_2$
Synthetic

Mol. Wt.

308.41

Test

Specification

Identity	IR
Appearance	Pale-yellow liquid
Bp	220 °C/0.05 mmHg
Assay (hplc)	≥ 90 %
Heavy metals	< 10 ppm
$d_{20}^{\circ C}$	1.030 g/mL
RI, $\eta_D^{20}^{\circ C}$	1.5648 [Lit]
Fp	155.3 °C

Storage: Maintain in cool, dry containment.

Wilshire Technologies

TEL: +1- 609-683-1117