

[Jump to Website](#)

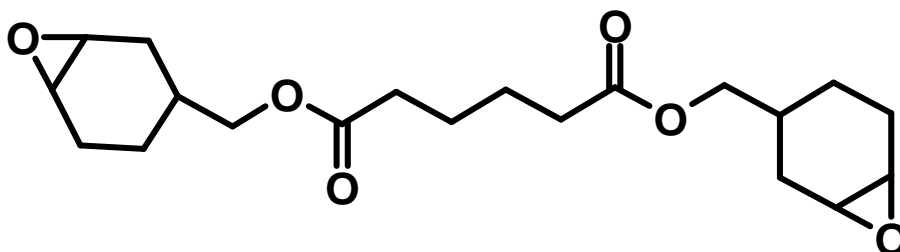
[Request Quote](#)

## Product Specifications

### **Bis(3,4-epoxycyclohexylmethyl)adipate**

CAS 3130-19-6

Structure:



Mol. Formula  
Source

$C_{20}H_{30}O_6$   
Synthetic

Mol. Wt.

366.45

---

*Test*

*Specification*

---

<b>Identity</b>	IR
<b>Appearance</b>	Light-yellow viscous liquid
<b>Assay (glpc)</b>	≥ 90%
<b>Color</b>	< 150 (alpha)
<b>Epoxy Equivalent</b>	190-225 g/mol
<b><math>d_{25}^{\circ C}</math></b>	1.149 g/mL
<b>Moisture</b>	< 0.1%
<b>Fp</b>	113 °C

---

*Storage:* Maintain in cool, dry containment.