

[Jump to Website](#)

[Request Quote](#)

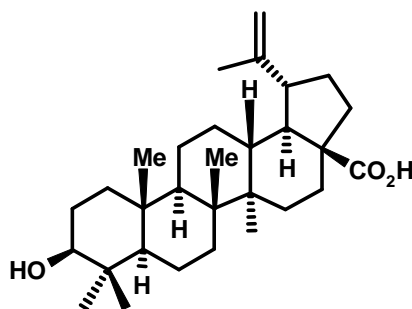
## Product Specifications

### **Betulinic Acid** (*all-natural*)

**CAS** 472-15-1

**Syn:** 3-Hydroxy-(3 $\beta$ )-lup-20(29)-en-28-oic Acid; 3 $\alpha$ H-Cyclopenta[a]chrysene; Mairin; Betulic Acid; (+)-Betulinic Acid; 3 $\beta$ -Hydroxylup-20(29)-en-28-oic Acid

**Structure:**



**Mol. Formula**  
**Source**

**C<sub>30</sub>H<sub>48</sub>O<sub>3</sub>**  
*Betula pendula* (Silver Birch); bark

**Mol. Wt.**

456.7

<i>Test</i>	<i>Specification</i>
<b>Appearance</b>	White / off-white fine powder
<b>Mp</b>	> 300 ° C
<b>Assay</b> (hplc)	≥ 90%
<b>Heavy Metals</b>	≤ 10 ppm
As	≤ 2 ppm
<b>LOD</b>	≤ 1.0%
<b>Residual Solvent(s)</b>	≤ 1000 ppm
Ethanol	
<b>Sulfated Ash</b>	≤ 1%

**Storage:** Maintain in cool, dry containment.