

Click www.WilshireTechnologies.com to go to site.

Product Specifications

Product Name

BETULIN (BETULINOL)

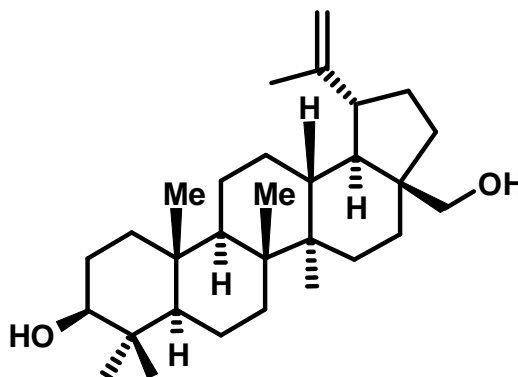
Syn:

Lup-20(29)-ene-3,28-diol;
Lup-20(30)-ene-3 β ,28-diol; Betulol

CAS No.

473-98-3

Structure:



Mol. Formula

C₃₀H₅₀O₂

Mol. Weight

442.7

Plant Source

Betula pendula (Silver Birch bark)

<i>Test</i>	<i>Specification</i>
Identity	Infrared
Appearance	White microcryst. powder
Mp	248 – 251 °C (Lit.)
Assay (hplc)	Two grades: ≥ 98 %; > 90 %
Heavy Metals (Pb)	< 10 ppm
LOD	< 1 %

Storage: Maintain in cool, dry, dark containment