

[Jump to Website](#)

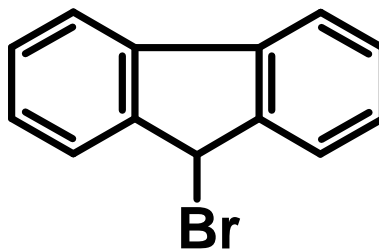
[Request Quote](#)

Product Specifications

9-Bromofluorene

CAS 1940-57-4

Structure:



Mol. Formula
Source

$C_{13}H_9Br$
Synthetic

Mol. Wt.

245.12

<i>Test</i>	<i>Specification</i>
Appearance	White crystalline solid
Mp	102-104 °C
Assay (hplc)	≥ 98%
LOD	< 1%
Ash	< 0.3%
Heavy Metals	< 10 ppm

Storage: Maintain in cool, dry containment.