

[Jump to Website](#)

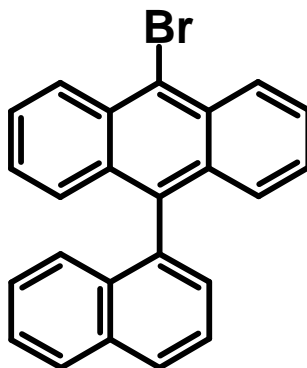
[Request Quote](#)

Product Specifications

9-Bromo-10-(2-naphthyl)anthracene

CAS 474688-73-8

Structure:



Mol. Formula
Source

$C_{24}H_{15}Br$
Synthetic

Mol. Wt.

383.29

Test

Specification

Appearance	Off-white crystalline solid
Assay (hplc)	≥ 98%
LOD	< 0.5%
Ash	< 0.2%
Heavy Metals	< 10 ppm

Storage: Maintain in cool, dry containment.