

[Jump to Website](#)

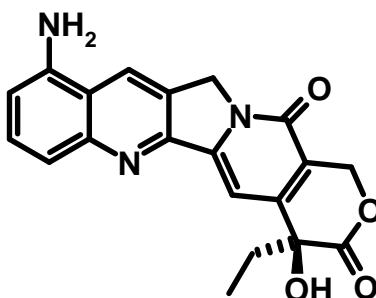
[Request Quote](#)

Product Specifications

9-Aminocamptothecin

CAS 91421-43-1

Structure:



Mol. Formula

$C_{20}H_{17}N_3O_4$

Mol. Wt.

363.37
(anhydrous)

Source

Synthetic

<i>Test</i>	<i>Specification</i>
Appearance	Yellow powder
Mp	≥ 300 °C (dec.)
Assay (hplc)	> 98%
Sp. Rot., $[\alpha]_D$	< -12 °(0.28 g, DMF)
LOD	< 3 %
Ash (residue on ignition)	< 0.3%
Heavy metals	< 10 ppm

Storage: Maintain in cool, dry containment. Avoid light.