

[Jump to Website](#)

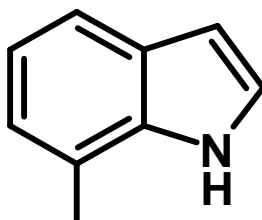
[Request Quote](#)

Product Specifications

7-Methylindole

CAS 933-67-5

Structure:



Mol. Formula
Source

C₉H₉N
Synthetic

Mol. Wt.

131.17

Test

Specification

Identity	IR
Appearance	White to pale-yellow
Bp	266 °C / 760 mm Hg
Mp	81° - 83 °C (uncorrected)
Assay (glpc)	> 99%
Moisture (K-F)	< 0.5%
Ash (residue on ignition)	< 0.2%

Storage: Avoid air and strong light.