

[Jump to Website](#)

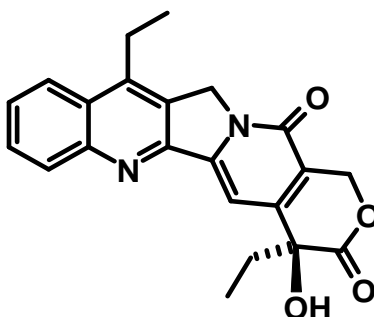
[Request Quote](#)

Product Specifications

7-Ethylcamptothecin

CAS 78287-27-1

Structure:



Mol. Formula
Source

$C_{22}H_{20}N_2O_4$
Synthetic

Mol. Wt.

376.40

<i>Test</i>	<i>Specification</i>
Appearance	Pale-yellow, microcryst. powder
Mp	258 -261°C
Assay (hplc)	> 96% (typically 99%)
Sp. Rot., [α] _D	N/A
LOD	< 3 %
Heavy metals	< 10 ppm

Storage: Maintain in cool, dry containment.