

[Jump to Website](#)

[Request Quote](#)

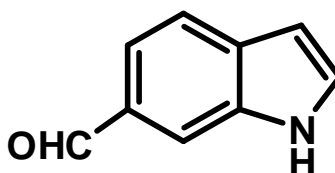
Product Specifications

6-Indolecarboxaldehyde

CAS 1196-70-9

Syn: Indole-6-carboxaldehyde; 6-Formylindole

Structure:



Mol. Formula
Source

C_9H_7NO
Synthetic

Mol. Wt.

145.16

<i>Test</i>	<i>Specification</i>
Identity	IR
Appearance	Beige to light-brown solid
Mp	127-131 °C (Lit.)
Assay (glpc)	> 98%
LOD	< 1%
Ash (residue on ignition)	< 0.2%
Heavy metals	< 20 ppm

Storage: Maintain in DARK, cool, dry containment. Product is subject to autoxidation.