

[Jump to Website](#)

[Request Quote](#)

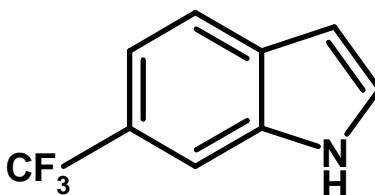
## Product Specifications

### 5-(Trifluoromethyl)indole

CAS 100846-24-0

Syn: 5-(Trifluoromethyl)-1H-indole

Structure:



Mol. Formula  
Source

$C_9H_6F_3N$   
Synthetic

Mol. Wt.

185.15

<i>Test</i>	<i>Specification</i>
Identity	IR
Appearance	Clear to pale-yellow liquid
Bp	150 °C / 10 mm Hg
Assay (glpc)	> 98%
Moisture	< 0.5%
Ash (residue on ignition)	< 0.2%
Heavy metals	< 10 ppm

*Storage:* Maintain in cool, dry containment.