

[Jump to Website](#)

[Request Quote](#)

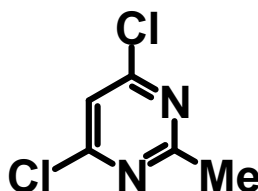
## Product Specifications

### **4,6-Dichloro-2-methylpyrimidine**

**CAS** 1780-26-3

**Syn:** 2-Methyl-4,6-dichloropyrimidine

**Structure:**



**Mol. Formula**  
**Source**

**C<sub>5</sub>H<sub>4</sub>Cl<sub>2</sub>N<sub>2</sub>**  
*Synthetic*

**Mol. Wt.**

163.00

---

---

*Test*

*Specification*

---

---

<b>Identity</b>	IR
<b>Appearance</b>	Off-white cast solid
<b>Mp</b>	41.5-45.5 °C [Lit.]
<b>Assay</b>	> 98%
<b>Moisture (K-F)</b>	< 0.5%
<b>Sulfate Ash (residue on ignition)</b>	< 0.2%
<b>Heavy metals</b>	< 10 ppm
<b>Fp</b>	208 °F

---

*Storage:* Maintain in cool, dry containment.