

[Jump to Website](#)

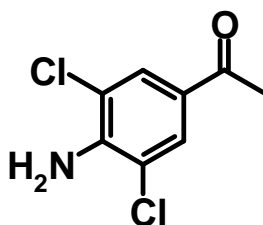
[Request Quote](#)

Product Specifications

4'-Amino-3',5'-dichloroacetophenone

CAS 37148-48-4

Structure:



Mol. Formula
Source

C₉H₅Cl₂N
Synthetic

Mol. Wt.

198.05

<i>Test</i>	<i>Specification</i>
Identity	Infrared
Appearance	Flaxen-colored powder
Mp	162-164 °C
Assay (glpc)	> 99%
Water Content (K-F)	< 0.05%
Ash (residue on ignition)	< 0.2%
Heavy metals	< 10 ppm

Storage: Maintain in cool, dry containment.