

[Jump to Website](#)

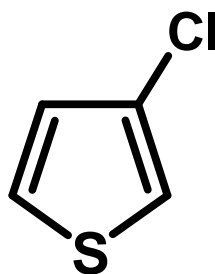
[Request Quote](#)

## Product Specifications

### 3-Chlorothiophene

CAS 17249-80-8

Structure:



Mol. Formula  
Source

C<sub>4</sub>H<sub>3</sub>ClS  
Synthetic

Mol. Wt.

118.58

---

---

*Test*

*Specification*

Identity	IR
Appearance	Clear, colorless to pale-yellow liquid
Bp	137-139 °C (Lit.)
Assay (glpc)	> 98%
$d_{25}^{\circ\text{C}}$	1.276 g/mL (Lit.)
RI, $\eta_D^{20\text{ }^{\circ\text{C}}}$	1.553 (Lit.)
Fp	99 °F

---

*Caution:* Flammable liquid ! Store and handle accordingly.

**Wilshire Technologies**

**TEL: +1- 609-683-1117**