

[Jump to Website](#)

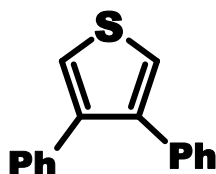
[Request Quote](#)

Product Specifications

3,4-Diphenylthiophene

CAS 95831-30-4

Structure:



Mol. Formula
Source

$C_{16}H_{12}S$
Synthetic

Mol. Wt.

236.33

<i>Test</i>	<i>Specification</i>
Identity	IR, NMR
Appearance	White microcryst. powder
Mp	115-116 °C
Assay	> 98 %
LOD	< 1%
Ash (residue on ignition)	< 0.1%
Heavy metals	< 10 ppm

Storage: Maintain in cool, dry containment.