

[Jump to Website](#)

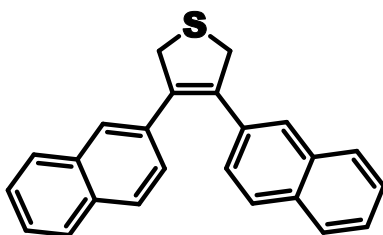
[Request Quote](#)

## Product Specifications

### 3,4-Dinaphthalene-2-yl-2,5-dihydrothiophene

CAS 100989-95-5

Structure:



Mol. Formula  
Source

$C_{24}H_{18}S$   
Synthetic

Mol. Wt.

338.46

<i>Test</i>	<i>Specification</i>
Identity	IR, NMR
Mp	NA
Assay	> 98 %
LOD	< 1%
Ash (residue on ignition)	< 0.1%
Heavy metals	< 10 ppm

*Storage:* Maintain in cool, dry containment.