

[Jump to Website](#)

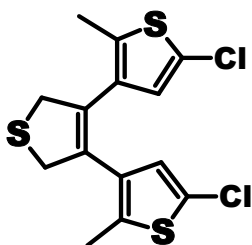
[Request Quote](#)

Product Specifications

3,4-Bis(5-chloro-2-methylthiophen-3-yl)-2,5-dihydrothiophene

CAS 528604-88-8

Structure:



Mol. Formula
Source

$C_{14}H_{12}Cl_2S_3$
Synthetic

Mol. Wt.

347.35

Test

Specification

Identity	IR, NMR
Mp	NA
Assay	> 98 %
LOD	< 1%
Ash (residue on ignition)	< 0.1%
Heavy metals	< 10 ppm

Storage: Maintain in cool, dry containment.