

[Jump to Website](#)

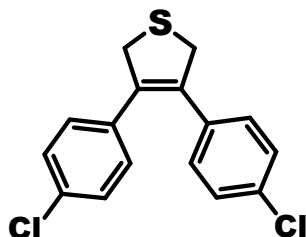
[Request Quote](#)

Product Specifications

3,4-Bis(4-chlorophenyl)-2,5-dihydrothiophene

CAS 951384-58-0

Structure:



Mol. Formula
Source

$C_{16}H_{12}Cl_2S$
Synthetic

Mol. Wt.

307.24

<i>Test</i>	<i>Specification</i>
Identity	IR, NMR
Mp	NA
Assay	> 98 %
LOD	< 1%
Ash (residue on ignition)	< 0.1%
Heavy metals	< 10 ppm

Storage: Maintain in cool, dry containment.