

[Jump to Website](#)

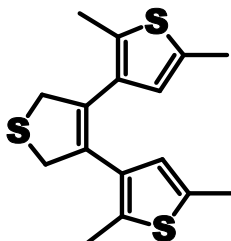
[Request Quote](#)

## Product Specifications

### **3,4-Bis(2,5-dimethylthiophen-3-yl)-2,5-dihydrothiophene**

CAS 198906-72-8

Structure:



Mol. Formula  
Source

$C_{16}H_{18}S_3$   
Synthetic

Mol. Wt.

306.51

<i>Test</i>	<i>Specification</i>
Identity	IR, NMR
Mp	89-91 °C
Assay	> 98 %
LOD	< 1%
Ash (residue on ignition)	< 0.1%
Heavy metals	< 10 ppm

*Storage:* Maintain in cool, dry containment.