

[Jump to Website](#)

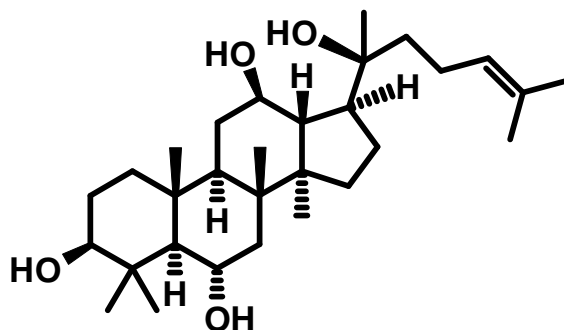
[Request Quote](#)

Product Specifications

20(S)-Protopanaxatriol

CAS 34080-08-5

Structure:



Mol. Formula
Source

$C_{30}H_{50}O_4$
Panax ginseng C.A. Mey., Araliaceae
(isolated from flower)

Mol. Wt.

474.72

<i>Test</i>	<i>Specification</i>
Identity	IR
Appearance	White powder
Mp	N/A
Assay (hplc; TLC)	≥ 98 %
Sp. Rot., $[\alpha]_D$	N/A
LOD	< 0.5 %
Ash (residue on ignition)	< 0.2 %
Heavy metals	< 10 ppm

Storage: Maintain in cool, dry containment.