

[Jump to Website](#)

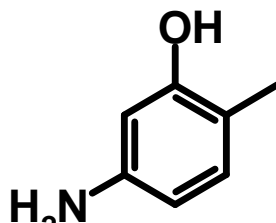
[Request Quote](#)

Product Specifications

2-Methyl-5-aminophenol

CAS 2835-95-2

Structure:



Mol. Formula
Source

C₇H₉NO
Synthetic

Mol. Wt.

123.15

<i>Test</i>	<i>Specification</i>
Identity	Infrared, H-NMR
Appearance	White crystals
Mp	159-162 °C [Lit.]
Assay (glpc)	> 99.5 %
TLC	One spot
LOD	< 0.5%
Ash (residue on ignition)	< 0.5%
Heavy metals	
Fe	< 20 ppm
Pb	< 2 ppm
As	< 2 ppm

Storage: Maintain in cool, dry containment.