

[Jump to Website](#)

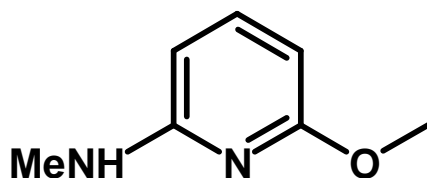
[Request Quote](#)

## Product Specifications

### 2-Methoxy-6-(methylamino)pyridine

CAS 88569-83-9

Structure:



Mol. Formula  
Source

$C_7H_{10}N_2O$   
Synthetic

Mol. Wt.

138.17

<i>Test</i>	<i>Specification</i>
Identity	IR
Appearance	Light yellow liquid
Bp	NA
Assay (glpc)	> 98 %
Moisture (K-F)	< 0.3%
$d_{20}^{\circ C}$	1.09 g/mL
RI, $\eta_D^{20}^{\circ C}$	1.5595
Fp	NA

*Storage:* Maintain in cool, dry containment.