

[Jump to Website](#)

[Request Quote](#)

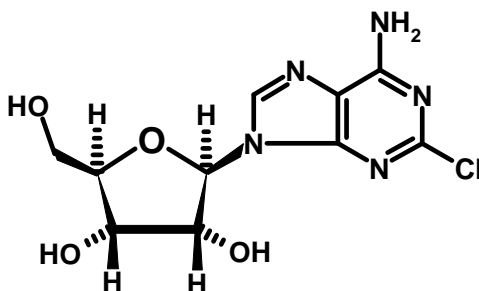
## Product Specifications

### 2-Chloroadenosine

CAS 146-77-0

Syn: 6-Amino-2-chloropurine

Structure:



Mol. Formula  
Source

$C_{10}H_{12}ClN_5O_4$   
Synthetic

Mol. Wt.

301.69

---

---

<i>Test</i>	<i>Specification</i>
-------------	----------------------

Appearance	White crystalline solid
Mp	> 280 °C
Assay (hplc)	> 98 %
LOD	< 1%
Ash (residue on ignition)	< 0.5%
Heavy metals	< 20 ppm
As	< 2 ppm

---

*Storage:* Maintain in cool, dry containment.