

[Jump to Website](#)

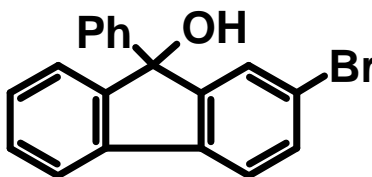
[Request Quote](#)

Product Specifications

2-Bromo-9-phenyl-9H-fluoren-9-ol

CAS 736928-22-6

Structure:



Mol. Formula
Source

$C_{19}H_{13}BrO$
Synthetic

Mol. Wt.

337.22

Test

Specification

Appearance	Off-white to pale-yellow powder
Assay (hplc)	≥ 98%
LOD	< 1%
Ash (residue on ignition)	< 0.2%
Heavy metals	< 10 ppm

Storage: Maintain in cool, dry containment.