

[Jump to Website](#)

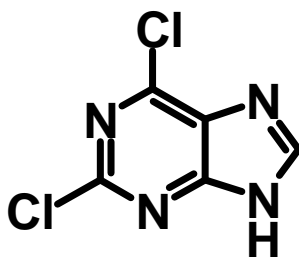
[Request Quote](#)

Product Specifications

2,6-Dichloropurine

CAS 5451-40-1

Structure:



Mol. Formula
Source

$C_5H_4Cl_2N_4$
Synthetic

Mol. Wt.

167.06

| <i>Test</i> | <i>Specification</i> |
|---------------------------|---------------------------|
| Identity | IR |
| Appearance | White to off-white powder |
| Mp | 185.5 (dec) [Lit.] |
| Assay (hplc) | > 98 % |
| LOD | < 0.5 % |
| Ash (residue on ignition) | < 0.2 % |
| Heavy metals | < 10 ppm |

Storage: Maintain in cool, dry containment.