

[Jump to Website](#)

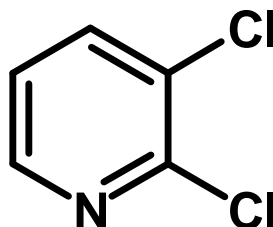
[Request Quote](#)

## Product Specifications

### **2,3-Dichloropyridine**

CAS 2402-77-9

Structure:



Mol. Formula  
Source

$C_5H_3Cl_2N$   
*Synthetic*

Mol. Wt.

147.99

---

---

#### *Test*

#### *Specification*

<b>Identity</b>	IR
<b>Appearance</b>	White/off-white microcryst. powder
<b>Mp</b>	64-67°C (lit.)
<b>Assay (glpc)</b>	> 98 %
<b>LOD</b>	< 0.5%
<b>Ash (residue on ignition)</b>	< 0.2%
<b>Heavy metals</b>	< 10 ppm

---

*Storage:* Maintain in cool, dry containment.