

[Jump to Website](#)

[Request Quote](#)

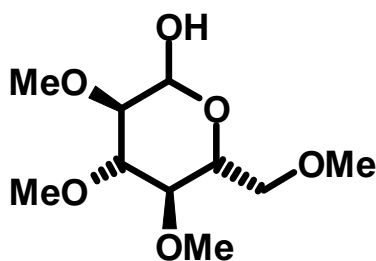
## Product Specifications

### **2,3,4,6-Tetramethyl-D-glucose**

**CAS** 7506-68-5

**Syn:** 2,3,4,6-Tetra-O-methyl-D-glucopyranose

**Structure:**



**Mol. Formula**  
**Source**

**C<sub>10</sub>H<sub>20</sub>O<sub>6</sub>**  
*Synthetic*

**Mol. Wt.**

175.6

---

---

*Test*

*Specification*

---

---

<b>Identity</b>	IR
<b>Appearance</b>	White microcryst. solid
<b>Mp</b>	90-94 °C [Lit.]
<b>Assay (hplc)</b>	> 98 %
<b>Sp. Rot., [α]<sub>D</sub></b>	88-94° (c = 1.0, H <sub>2</sub> O) [Lit.]
<b>LOD</b>	< 1 %
<b>Ash (residue on ignition)</b>	< 0.1%
<b>Heavy metals</b>	< 10 ppm
<b>As</b>	< 1 ppm
<b>TLC</b>	Single spot

---

**Storage:** Maintain in cool, dry containment.